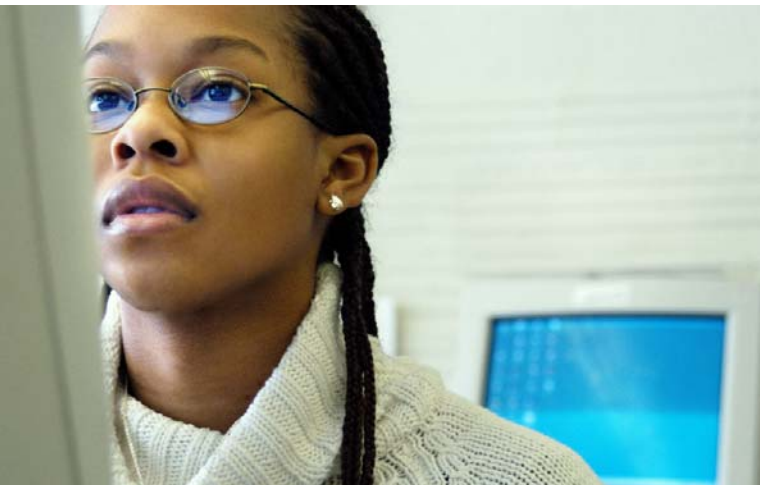




NEW YORK–NEW JERSEY

# Public Health Training Center

## What is the NYNJ PHTC?



The New York–New Jersey Public Health Training Center (NYNJ PHTC) is a training resource for public health workers in New York, New Jersey, and other states. It is a collaborative project of the Columbia University Mailman School of Public Health, the University at Albany School of Public Health, the University of Medicine and Dentistry of New Jersey School of Public Health, and partnering state, city, county, and local health departments throughout New York and New Jersey.

The NYNJ PHTC offers flexible, web-based training programs for public health workers, as well as some face-to-face programs in New York and New Jersey. There is no charge for web-based courses and many offer continuing education credits.

## For More Information

Contact the Center’s Program Coordinator at 212-305-6984 or visit [www.nynj-phtc.org](http://www.nynj-phtc.org) for additional information.

“Great learning format. This will be great as a workforce development tool for our public health agency.” –*Health Promotion Director, local health department, Washington*

“I am so pleasantly surprised by this training. It was really excellent. I felt like I was actually part of a seminar group. Very unique interactive program.” –*Public Health Specialist, Vermont*

This brochure was made possible by grant number D20HP00016 from the Health Resources and Services Administration, DHHS, Public Health Training Center Program. Its contents are solely the responsibility of the authors and do not necessarily represent the official views of HRSA.



A Resource for the Public Health Workforce



[www.nynj-phtc.org](http://www.nynj-phtc.org)



“I am not computer savvy; however, this program was easy to maneuver and nonthreatening. I did not have the time to complete this in-service in one session and did appreciate the fact that I could leave it and pick it up at any time.” —Public Health Nurse, New York



**E-LEARNING.** 24-hour access, authoritative information, engaging scenarios and course-work. It fits *your* schedule.

## Center Training Programs

At [www.nynj-phtc.org](http://www.nynj-phtc.org) you can find our free web-based training programs, as well as listings of distance-accessible public health training programs developed by other training centers and organizations. Our web-based courses are self-paced, so you can stop and return to the training program at your convenience. You may print a certificate of completion upon finishing each course and may apply for Continuing Education Units (CEUs) if offered for that course.

The NYNJ PHTC offers the following interactive web-based courses based on the Council on Linkages Core Competencies for Public Health Professionals. Check the website often for new offerings!

**Orientation to Public Health** (1 hour) is designed to orient staff new to the field of public health.

**Exploring Cross-Cultural Communication** (2.5 hours, 3 modules) helps public health workers develop knowledge, attitudes, and skills to improve their ability to effectively communicate across cultures in their work.

**Practicing Cross-Cultural Communication** (4.5 hours, 3 modules) gives learners an opportunity to apply previously learned cross-cultural communication skills in a series of three public health case studies.

**Health Literacy & Public Health** (2.5 hours, 2 modules) introduces the concept of health literacy, considers the causes and consequences of low literacy in healthcare and its effect on population health, and provides practical techniques for addressing literacy issues in spoken and written communications.

**Mastering the Roles of Supervision** (3 hours, 2 modules) is designed for supervisors new to their roles. The course describes the often competing roles associated with being an effective public health supervisor and provides learners with guided self-assessment opportunities.

**From Evidence to Practice: Using a Systematic Approach to Address Disparities in Birth Outcomes** (3 hours), developed by the New York State Department of Health, teaches the evidence-based public health decision-making process.

- Additional resources available through [www.nynj-phtc.org](http://www.nynj-phtc.org):
- Two web-based case studies: *Pharmaceuticals in our Waters—A Public Health Perspective* and *Move It: A Case Study in Policy Change and Health Promotion Program Planning*
  - *Introduction to Public Health—Comprehensive Curriculum Resource Packet*, a downloadable train-the-trainer instructional package, including an instructor’s manual and PowerPoint slides, which covers vital topics in public health
  - A database of more than 150 distance-learning courses offered by other organizations that can be searched by subject area, training format, and keyword

“I have appreciated and thoroughly enjoyed this well-designed course. The teaching methods were new and interesting!”  
—Health Educator, Tennessee

## Public Health Training Centers across the U.S.

The NYNJ PHTC is one of 14 Public Health Training Centers across the nation funded by the Health Resources and Services Administration (HRSA) to provide fundamental training to the public health workforce. Visit the National PHTC Network Distance Education Center ([www.publichealthtrainingcenters.org](http://www.publichealthtrainingcenters.org)), a searchable database of distance-accessible trainings offered by all 14 PHTCs, for additional training opportunities.



PHTC Geographic Coverage	
<span style="color: blue;">■</span> Midwest PHTC	<span style="color: green;">■</span> Michigan PHTC
<span style="color: pink;">■</span> Northwest PHTC	<span style="color: lightgreen;">■</span> Southeast PHTC
<span style="color: yellow;">■</span> Pacific PHTC	<span style="color: orange;">■</span> Texas PHTC
<span style="color: gold;">■</span> South Central PHTC	<span style="color: lightblue;">■</span> PA & Ohio PHTC
<span style="color: red;">■</span> Mid-America PHTC	<span style="color: purple;">■</span> Heartland PHTC
<span style="color: brown;">■</span> New York/New Jersey PHTC	<span style="color: magenta;">■</span> Mid-Atlantic PHTC
<span style="color: purple;">■</span> Upper Midwest PHTC	<span style="color: white;">■</span> States not covered by the National PHTC Network
<span style="color: blue;">■</span> New England PHTC	